

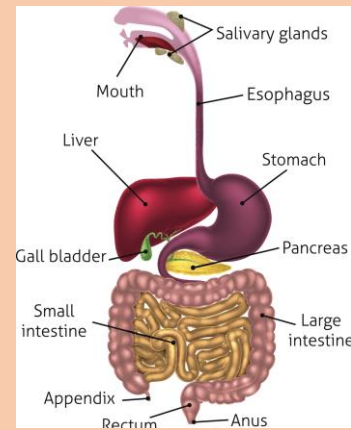
Year 4 Animals including humans- How do I digest my food?



Permanent Teeth Chart

Names / Groups	Tooth Eruption
Central Incisor	7 - 8 yrs.
Lateral Incisor	8 - 9 yrs.
Canine	11 - 13 yrs.
First Premolar	10 - 12 yrs.
Second Premolar	11 - 13 yrs.
First Molar	6 - 7 yrs.
Second Molar	12 - 14 yrs.
Third Molar	17 - 25 yrs.
Molars	17 - 25 yrs.
Premolars	12 - 14 yrs.
Canine	6 - 7 yrs.
Incisors	11 - 13 yrs.
	10 - 12 yrs.
	9 - 11 yrs.
	7 - 8 yrs.
	6 - 7 yrs.

Digestive system



Red Hill Riches

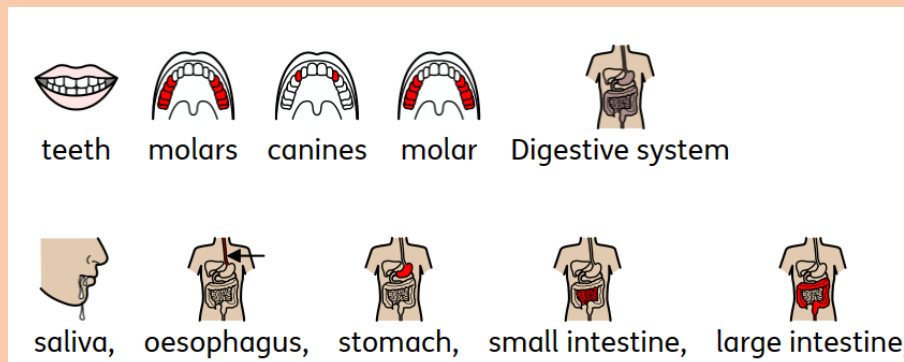
I know:

The digestive system helps us to digest our food.

The digestive system includes the stomach, small/large intestine and the rectum

A human has three types of teeth, incisors, canines and molars and these each perform different functions.

Glossary



Last Year's Linked Learning

Humans and some animals have skeletons and muscles for support, protection and movement.

Muscles work in pairs.

A nutritious diet can be achieved in a variety of ways.